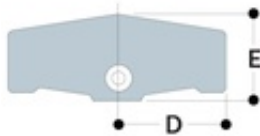


**KK90-8** KK90 - PGR Three Socket Tee (Galvanized Steel)



KK90 is used to join the top rail to an intermediate upright. (Special Order Only).

| Part | Weight    | A | D       | E        |
|------|-----------|---|---------|----------|
| 90-8 | 3.89 lbs. | 8 | 3.9 in. | 3.46 in. |