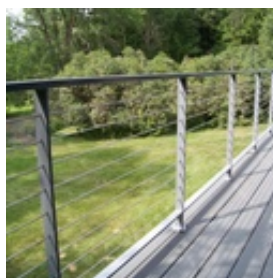
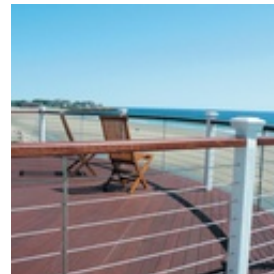


**CA224-SM/50** CA224-SM - 1/8" Invisiware Cable Rail Kit - Series 200 For Metal and Wood Posts (50FT)



- Each kit contains one cable and associated hardware including the end caps.
- Kit packaged using Skin Packaging on a retail printed card (not bulk)
- Use with our Metal 1/8" Cable Pre-Fabricated Posts. [Cable Railing Posts](#)
- 232 SERIES Cable Railing Kit for Metal Posts with 1/8" cable (5' to 25' long)
- 224 SERIES Cable Railing Kit for Metal Posts with 1/8" cable (30' to 50' long)
- Each kit contains one cable and associated hardware
- Tools Needed: 5/32" drill bit for cable, 29/64" drill bit for Receiver and Pull-Lock installation, 3/16" Hex wrench for tensioning Receiver, Cable cutting tool. **(Please note: Our metal posts come pre-drilled)**

[Cable Installation With Metal Posts](#)