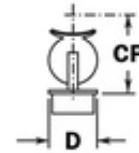
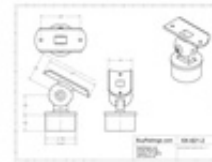


40-821/2 821 - Ball Adjustable Saddle (Polished Stainless Steel 304, 2" OD (0.05" Wall))



Adjustable Ball Saddle
Used to connect a vertical post to a horizontal tube at an angle.

Part #	Material	Finish	Size	Weight	Lead Time	Availability
821-001	304 SS	Polished	2" x 2"	0.15	1-2 Weeks	In Stock
821-002	304 SS	Satin	2" x 2"	0.15	1-2 Weeks	In Stock
821-003	304 SS	Chrome Plated	2" x 2"	0.15	1-2 Weeks	In Stock
821-004	304 SS	Powder Coat	2" x 2"	0.15	1-2 Weeks	In Stock



Universal railing connectors are either factory assembled into metal posts or as individual components to accommodate any handrail, foot rail, stair railing, or other architectural railing configuration. Available finishes may include polished brass, satin, chrome plated, or Lido-Tone powder coating.