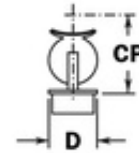
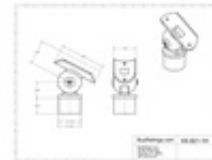


**40-821/1H** 821 - Ball Adjustable Saddle (Polished Stainless Steel 304, 1.5" OD (0.05" Wall))



**Adjustable Ball Saddle**  
Used to connect a vertical post to a horizontal tube at an angle.

Part #	Material	Finish	Size	CP	D	Capacity
40-821/1H	304 SS	Polished	1.5" OD	1.5"	1.5"	100 lbs
40-821/2H	304 SS	Polished	2" OD	2"	2"	150 lbs
40-821/3H	304 SS	Polished	3" OD	3"	3"	200 lbs
40-821/4H	304 SS	Polished	4" OD	4"	4"	250 lbs
40-821/5H	304 SS	Polished	5" OD	5"	5"	300 lbs



Universal railing connectors are either factory assembled into metal posts or as individual components to accommodate any handrail, foot rail, stair railing, or other architectural railing configuration. Available finishes may include polished brass, satin, chrome plated, or Lido-Tone powder coating.