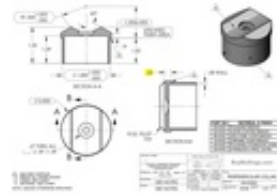


40-818/2 818 - Perpendicular Collar (Polished Stainless Steel 304, 2" OD (0.05" Wall))



Perpendicular Collar
Connect one tube to another by welding or using a Lido Weld.

Model	Material	Finish	Length	OD	ID	Weight
818-01	304	Polished	1.00	2.00	1.90	0.15
818-02	304	Polished	1.50	2.00	1.90	0.22
818-03	304	Polished	2.00	2.00	1.90	0.30
818-04	304	Polished	2.50	2.00	1.90	0.37
818-05	304	Polished	3.00	2.00	1.90	0.45
818-06	304	Polished	3.50	2.00	1.90	0.52
818-07	304	Polished	4.00	2.00	1.90	0.60
818-08	304	Polished	4.50	2.00	1.90	0.67
818-09	304	Polished	5.00	2.00	1.90	0.75
818-10	304	Polished	5.50	2.00	1.90	0.82
818-11	304	Polished	6.00	2.00	1.90	0.90
818-12	304	Polished	6.50	2.00	1.90	0.97
818-13	304	Polished	7.00	2.00	1.90	1.05
818-14	304	Polished	7.50	2.00	1.90	1.12
818-15	304	Polished	8.00	2.00	1.90	1.20
818-16	304	Polished	8.50	2.00	1.90	1.27
818-17	304	Polished	9.00	2.00	1.90	1.35
818-18	304	Polished	9.50	2.00	1.90	1.42
818-19	304	Polished	10.00	2.00	1.90	1.50
818-20	304	Polished	10.50	2.00	1.90	1.57
818-21	304	Polished	11.00	2.00	1.90	1.65
818-22	304	Polished	11.50	2.00	1.90	1.72
818-23	304	Polished	12.00	2.00	1.90	1.80
818-24	304	Polished	12.50	2.00	1.90	1.87
818-25	304	Polished	13.00	2.00	1.90	1.95
818-26	304	Polished	13.50	2.00	1.90	2.02
818-27	304	Polished	14.00	2.00	1.90	2.10
818-28	304	Polished	14.50	2.00	1.90	2.17
818-29	304	Polished	15.00	2.00	1.90	2.25
818-30	304	Polished	15.50	2.00	1.90	2.32
818-31	304	Polished	16.00	2.00	1.90	2.40
818-32	304	Polished	16.50	2.00	1.90	2.47
818-33	304	Polished	17.00	2.00	1.90	2.55
818-34	304	Polished	17.50	2.00	1.90	2.62
818-35	304	Polished	18.00	2.00	1.90	2.70
818-36	304	Polished	18.50	2.00	1.90	2.77
818-37	304	Polished	19.00	2.00	1.90	2.85
818-38	304	Polished	19.50	2.00	1.90	2.92
818-39	304	Polished	20.00	2.00	1.90	3.00
818-40	304	Polished	20.50	2.00	1.90	3.07
818-41	304	Polished	21.00	2.00	1.90	3.15
818-42	304	Polished	21.50	2.00	1.90	3.22
818-43	304	Polished	22.00	2.00	1.90	3.30
818-44	304	Polished	22.50	2.00	1.90	3.37
818-45	304	Polished	23.00	2.00	1.90	3.45
818-46	304	Polished	23.50	2.00	1.90	3.52
818-47	304	Polished	24.00	2.00	1.90	3.60
818-48	304	Polished	24.50	2.00	1.90	3.67
818-49	304	Polished	25.00	2.00	1.90	3.75
818-50	304	Polished	25.50	2.00	1.90	3.82
818-51	304	Polished	26.00	2.00	1.90	3.90
818-52	304	Polished	26.50	2.00	1.90	3.97
818-53	304	Polished	27.00	2.00	1.90	4.05
818-54	304	Polished	27.50	2.00	1.90	4.12
818-55	304	Polished	28.00	2.00	1.90	4.20
818-56	304	Polished	28.50	2.00	1.90	4.27
818-57	304	Polished	29.00	2.00	1.90	4.35
818-58	304	Polished	29.50	2.00	1.90	4.42
818-59	304	Polished	30.00	2.00	1.90	4.50
818-60	304	Polished	30.50	2.00	1.90	4.57
818-61	304	Polished	31.00	2.00	1.90	4.65
818-62	304	Polished	31.50	2.00	1.90	4.72
818-63	304	Polished	32.00	2.00	1.90	4.80
818-64	304	Polished	32.50	2.00	1.90	4.87
818-65	304	Polished	33.00	2.00	1.90	4.95
818-66	304	Polished	33.50	2.00	1.90	5.02
818-67	304	Polished	34.00	2.00	1.90	5.10
818-68	304	Polished	34.50	2.00	1.90	5.17
818-69	304	Polished	35.00	2.00	1.90	5.25
818-70	304	Polished	35.50	2.00	1.90	5.32
818-71	304	Polished	36.00	2.00	1.90	5.40
818-72	304	Polished	36.50	2.00	1.90	5.47
818-73	304	Polished	37.00	2.00	1.90	5.55
818-74	304	Polished	37.50	2.00	1.90	5.62
818-75	304	Polished	38.00	2.00	1.90	5.70
818-76	304	Polished	38.50	2.00	1.90	5.77
818-77	304	Polished	39.00	2.00	1.90	5.85
818-78	304	Polished	39.50	2.00	1.90	5.92
818-79	304	Polished	40.00	2.00	1.90	6.00
818-80	304	Polished	40.50	2.00	1.90	6.07
818-81	304	Polished	41.00	2.00	1.90	6.15
818-82	304	Polished	41.50	2.00	1.90	6.22
818-83	304	Polished	42.00	2.00	1.90	6.30
818-84	304	Polished	42.50	2.00	1.90	6.37
818-85	304	Polished	43.00	2.00	1.90	6.45
818-86	304	Polished	43.50	2.00	1.90	6.52
818-87	304	Polished	44.00	2.00	1.90	6.60
818-88	304	Polished	44.50	2.00	1.90	6.67
818-89	304	Polished	45.00	2.00	1.90	6.75
818-90	304	Polished	45.50	2.00	1.90	6.82
818-91	304	Polished	46.00	2.00	1.90	6.90
818-92	304	Polished	46.50	2.00	1.90	6.97
818-93	304	Polished	47.00	2.00	1.90	7.05
818-94	304	Polished	47.50	2.00	1.90	7.12
818-95	304	Polished	48.00	2.00	1.90	7.20
818-96	304	Polished	48.50	2.00	1.90	7.27
818-97	304	Polished	49.00	2.00	1.90	7.35
818-98	304	Polished	49.50	2.00	1.90	7.42
818-99	304	Polished	50.00	2.00	1.90	7.50

Universal railing connectors are either factory assembled into metal posts or as individual components to accommodate any handrail, foot rail, stair railing, or other architectural railing configuration. Available finishes may include polished brass, satin, chrome plated, or Lido-Tone powder coating.

Note:

Flush fittings DO NOT include screws. Attach tube to fitting with Lido Weld adhesive, LB-00201.