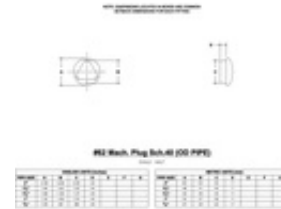


07610 62 - Plug/End Cap for Sch 40 Pipe - Aluminum (Aluminum Magnesium, 1-1/4" IPS)



Machined aluminum end cap for *schedule 40 pipe*. See below for different pipe sizes that these end caps are available for.

- Quick and easy way to assemble structural pipe systems
- Reduce labor costs by 70% • 100% reusable • No welding or threading • No drilling or bolting