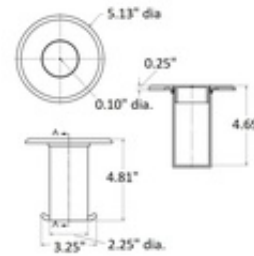


40-545/2 545 - Floor Socket With Cap 2" OD (Polished Stainless Steel 304)



The 545 floor socket with cap is the fitting to use for removable railing and queueing posts. It is designed to hold 2" round tube and has a receiving space that is just over 2" in inside diameter to receive the tube. It is available in brass and 304 grade stainless steel and is mounted into the ground - typically core drilled into concrete. This item includes a cap to close the opening when there is no post in place.

Consult local building codes for rail height, wall offset and other requirements.